



# The Stables

The  
**Angel**  
HALESWORTH

# Conference & Function Room



Our accessible and versatile function and dining space, has been created out of the ancient Stables building which extends out to the rear of the hotel beside our private car park.

Offering formal seating for 15-40 people for lunch, dinner or parties and 20-60 people for buffet style events.

For more information on seating options, numbers and menus or to discuss your personal requirements, please get in touch.

## HIRE RATES

### DAILY CHARGE

8/9am - 4/5pm **£120**

### HALF DAY/EVENING CHARGE **£65**

### HOURLY CHARGE **£15**

Tea and Coffee **£2.50** per person

Tea, Coffee & Cake **£5.95** per person.

Telephone: **01986 873365**  
Email: **hotel@angel-halesworth.co.uk**  
**www.angel-halesworth.co.uk**

**The Angel**  
The Thoroughfare  
Halesworth IP19 8AH



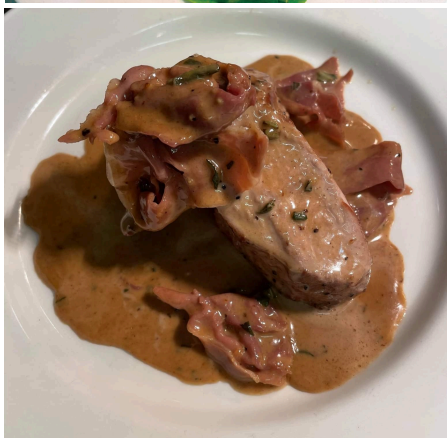
# The Stables

The Angel  
HALESWORTH

# Menu Options

Flexible menus drawn up from our bar and restaurant are available for any dining occasion for 15-40 people.

Contact us to discuss your requirements.



## FINGER BUFFET

**£11.95** per head

- Selection of sandwiches
- Warm sausage rolls
- Variety of cakes
- Mini quiches
- Tea and coffee

**Add on any of the below for  
£1.50 each per person;**

- Pizza slices
- Cheese or fruit scones
- Chips/fries/sweet potato fries (VG)
- Mixed salad bowls (VG)
- Falafel bites (VG)
- Honey & mustard sausages
- Lemon & garlic king prawns (£2.00)